


# DETECT DOOR

**wireless doorbell**



 user guide

 **Phonic Ear**<sup>®</sup>

**other resources online at [www.phonicear.dk](http://www.phonicear.dk)**

# **table of contents**

---

DETECT DOOR function . . . . .	1
DETECT DOOR features . . . . .	2
DETECT DOOR instructions. . . . .	7
Troubleshooting . . . . .	18
Test and approval . . . . .	19
Safety precautions . . . . .	20
Warranty . . . . .	21

## **DETECT DOOR function**

---

DETECT DOOR is one of the PUZZLE system's alerting transmitters. It functions as a wireless doorbell that connects to the existing doorbell installation and replaces the standard push button outside the door.

When a visitor pushes the DETECT DOOR button, a wireless alarm signal is sent to the PUZZLE system's receiver. DETECT DOOR works with the following receivers in the PUZZLE system: CALL, FLASH, WAKE, POCKETVIB, LOOP, BEAM, and LINK.

# DETECT DOOR features

---

- 1 push button  
To activate the unit
- 2 status light  
To indicate that unit is transmitting
- 3 alarm selector  
To select alarm pattern
- 4 channel selector  
To select personal code
- 5 input connector  
To interface to existing doorbell installation
- 6 fail indicator  
Indicates if the wire to the existing doorbell is not correctly installed
- 7 battery compartment
- 8 battery  
Lithium type ½ AA, 3.6V
- 9 mounting holes

## DETECT DOOR features

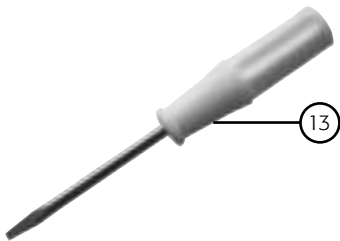
---

- ⑩ wire hole  
For wire to existing  
doorbell installation

- ⑪ disassembly nub

- ⑫ gasket  
To keep it water  
resistant

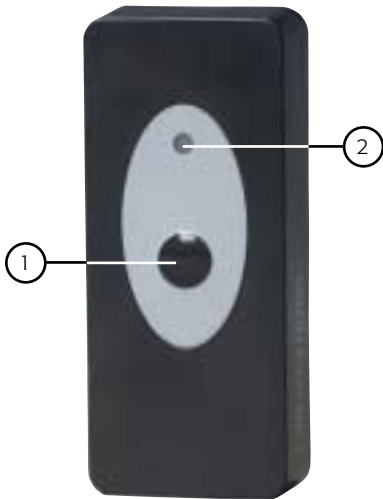
- ⑬ screwdriver



# DETECT DOOR features

---

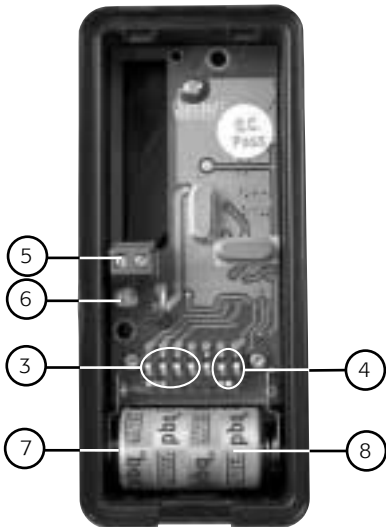
front



# DETECT DOOR features

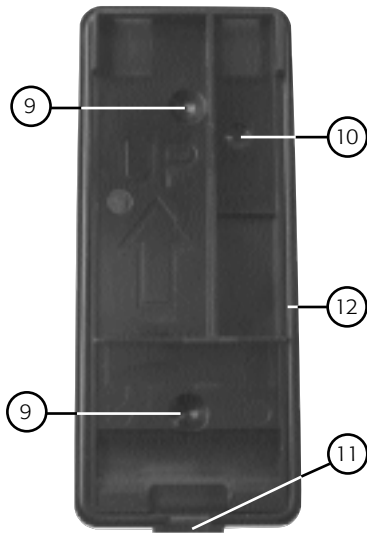
---

front from the inside



# DETECT DOOR features

back from the inside





# DETECT DOOR instructions

---

## 1a preparation

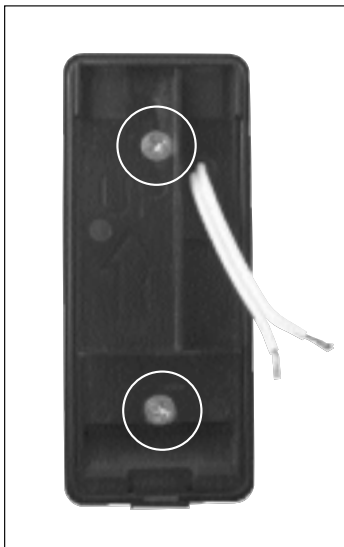


Disassemble your DETECT DOOR by lifting the bottom end of the front part while pushing the **release nub** with the screwdriver.

If DETECT DOOR connects to an existing doorbell installation remove existing doorbell plate. Then push out the material in the **wire hole** of DETECT DOOR using the screwdriver. Run the wires through the hole. Otherwise leave the material in the **wire hole** in place.

# DETECT DOOR instructions

## 1b preparation



Screw the back of  
DETECT DOOR into  
desired position using  
the two **mounting  
holes**.

## DETECT DOOR instructions

---

### 2 install battery

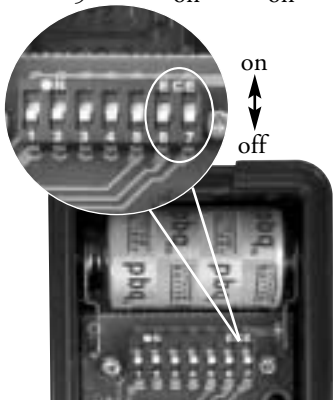


Install the **battery** into the **battery compartment**, being sure to orient the battery according to the symbols.

# DETECT DOOR instructions

## 3a select alarm pattern

<b>Pattern</b>	<b>Pin 6</b>	<b>Pin 7</b>
1	off	off
3	on	off
4	off	on
5	on	on



Alarm patterns that DETECT DOOR sends to the PUZZLE system's receivers are selected with pin 6 and 7 (see table).

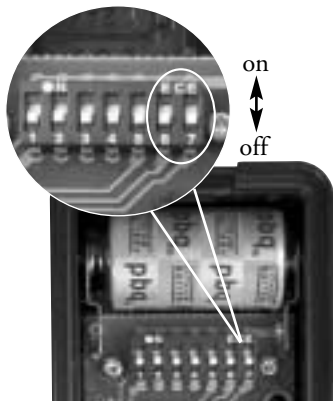
Setting a distinctive pattern for your DETECT DOOR will help you distinguish the arrival of a visitor from other alerts you may have set up PUZZLE transmitters to detect.

## DETECT DOOR instructions

---

### 3b select alarm pattern

**NOTE:** *Use the screwdriver included with DETECT DOOR to change the position of the pins.*

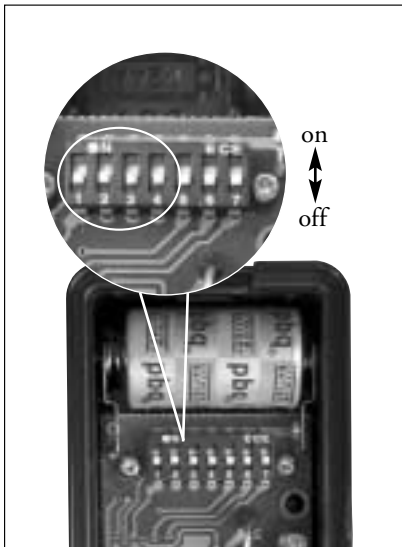


If you select e.g. alarm pattern 1 for the DETECT DOOR at the front door then you should select alarm pattern 3 for the DETECT DOOR at the back door, and so on. As each DETECT DOOR has its own alarm pattern you can become familiar with the different patterns.

**NOTE:** *Patterns 2, 6, and 7 are available with other PUZZLE transmitters.*

## DETECT DOOR instructions

### 4a select personal code



Personal code is selected by the pins 1, 2, 3, 4 according to the table on page 13.

**NOTE:** *The PUZZLE system's different receivers should be set to the same personal code.*

**NOTE:** *Use the screwdriver included with DETECT DOOR to change the position of the pins.*

## DETECT DOOR instructions

---

4b select personal code

Code	Pin 1	Pin 2	Pin 3	Pin 4
0	Off	Off	Off	Off
1	On	Off	Off	Off
2	Off	On	Off	Off
3	On	On	Off	Off
4	Off	Off	On	Off
5	On	Off	On	Off
6	Off	On	On	Off
7	On	On	On	Off
8	Off	Off	Off	On
9	On	Off	Off	On
A	Off	On	Off	On
B	On	On	Off	On
C	Off	Off	On	On
D	On	Off	On	On
E	Off	On	On	On
F	On	On	On	On

## DETECT DOOR instructions

### 5a connect existing doorbell



Cut the wire from the existing doorbell installation to approximately 5cm length and remove 3mm of insulation from each of the two wires. Insert one of the two wires into one of the **input connector** holes. Firmly tighten the screw to secure the wire.



## DETECT DOOR instructions

---

### 5b connect existing doorbell

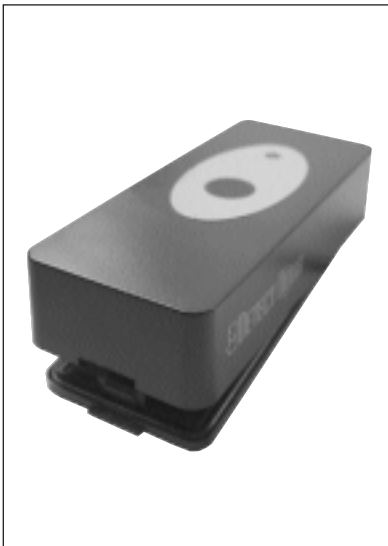


Insert the other wire into the other **input connector** hole and tighten the screw to secure this wire. If the **fail indicator** lights up reverse the connection.

**NOTE:** *Extra wire can be fitted into the compartment if necessary.*

## DETECT DOOR instructions

### 6 complete installation



Click the front of DETECT DOOR firmly into place on the back plate starting with the upper end.

**NOTE:** *Ensure that the gasket is fully in place before assembly.*

## DETECT DOOR instructions

---

### 7 complete installation



Depress the area of the **push button**. The DETECT DOOR transmits the signal to any PUZZLE receiver while the **status light** lights up.

**NOTE:** *If DETECT DOOR is connected to an existing doorbell installation pushing the push button enables the existing doorbell while the button is activated.*

# troubleshooting

---

Should your DETECT DOOR wireless doorbell not function satisfactorily, please check the list below:

## **The status light does not light up when pushing the activation button**

- Check that the battery is installed correctly. See [2].
- Replace the battery. See [2].

**NOTE:** *The status light lights up only for a short period of time following each activation.*

## **The status light does light up, but only some or none of the PUZZLE system's receivers emit an alarm**

- Check that DETECT DOOR and the PUZZLE system's receivers are using the same personal code. See [4a] and [4b].

## **If the PUZZLE system emits alarm without apparent reason**

- Change the personal code of the entire system to another setting, because the faulty alarms may relate to interference from neighbouring PUZZLE system installations. See [4a] and [4b].

# troubleshooting

---

## The fail indicator lights up regardless of wire connection

- You can ignore a lit fail indicator if your existing doorbell installation is AC power based and chimes when you depress the DETECT DOOR push button.

If you still have trouble after trying the ideas above please contact your local authorized Phonic Ear representative/installer.

## test and approval

---

DETECT DOOR is approved and CE marked in accordance with the R&TTE directive. Hereby, Phonic Ear, declares that this DETECT DOOR doorbell is in compliance with the essential requirements and other relevant provisions of Directive 1999/5/EC.



*Waste from electronic equipment  
must be handled according to  
local regulations.*

# safety precautions

---

## **Warning**

Lithium battery inside. Fire, explosion and severe burn hazard if the battery is incorrectly replaced. Do not recharge, disassemble, heat above 100°C/212°F, incinerate, or expose to water or direct sunlight.

To avoid damaging electronic circuitry, which may impair safety features do not disassemble, modify, or put pressure on this product.

## **Important note**

Lithium batteries should not be opened or burned. Exposure to the ingredients contained within or combusted products may be harmful.

# warranty

---

A one-year limited warranty is issued to the original consumer of this product(s) by Phonic Ear (two years inside the EU).

## **time period of warranty**

This warranty will go into effect upon the date of original purchase of this equipment, and will remain in effect for one calendar year (two years inside the EU) from that date as long as the instrument remains the property of the original consumer.

## **what is covered by this warranty**

Any electronic component which, because of workmanship, manufacturing, or design defects, fails to function properly under normal use during the life of this warranty will be replaced or repaired at no charge for parts or labor when returned to the factory service center. Transportation in is paid by the customer. If it is determined that repair is not feasible, the entire unit may be replaced with an equivalent unit upon mutual agreement of the manufacturer and customer.

## **what is not covered by this warranty**

- 1** Malfunctions resulting from abuse, neglect, or accident.
- 2** Peripheral accessories as itemized within the product brochure, when such items are returned after 90 days from the original purchase.
- 3** Alkaline batteries (if applicable).
- 4** Instruments connected, installed, used, or adjusted in a manner contrary to instructions provided by the manufacturer.

## warranty (cont'd)

---

- 5 Consequential damages and damages resulting from delay or loss of this instrument. The exclusive remedy under this warranty is strictly limited to repair or replacement as herein provided.
- 6 Products damaged in transit unless investigated by the shipper and returned to the warrantor with the investigation report.

Phonic Ear reserves the right to make changes in the design or construction of any of its instruments at any time without incurring any obligation to make any changes whatsoever on units previously purchased. This warranty is in lieu of all other expressed warranties. All expressed and implied warranties will terminate upon the expiration of this written warranty. No representative or person is authorized to represent or assume for us any liability in connection with the sale or use of our products other than as set forth above.

The above warranty does not affect any legal rights that you might have under applicable national legislation governing sale of consumer goods. Your distributor may have issued a warranty that goes beyond the clauses of this limited warranty. Please consult your distributor for further information.

### **what to do if you need service**

If you require service under the terms of this warranty, carefully package the instrument to prevent damage and return it to your distributor (see information on back cover). Please provide your receipt, a detailed description of the problem, your full name, billing address, and telephone number.



Your local representative:



---

**international:** +45 3917 7101

**u.s.:** 800.227.0735, then press 7 • **canada:** 800.263.8700

**website:** [www.phonicear.dk](http://www.phonicear.dk)